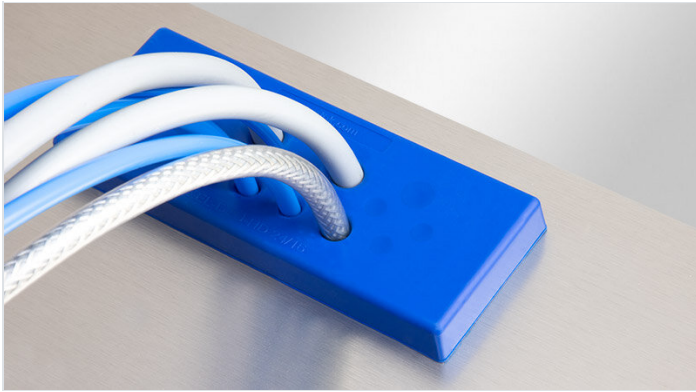


KEL-DPU-HD hygienic multi-membrane cable entry plates

with high strain relief function, pluggable / IP66 / IP68 / FDA compliant



The new cable entry plates KEL-DPU-HD have been specially developed for installation in food processing and packaging machines. During the development according to the Hygienic Design guidelines, care was taken to ensure that the visible side of the cable entry plate are free of dirt-collecting recesses. The surface was kept very smooth ($R_a = 0,421 \mu\text{m}$ acc. to ISO 4287). The outer contour has a radius of 6 mm instead of the required 3 mm. In addition, the KEL-DPU-HD uses an FDA-compliant elastomer in accordance with food approval 1935/2004/EG and (EU) 10/2011. The signal colour blue ensures a clear visual colour recognition.

KEL-DPU-HD entry plates are designed to route and seal cables without connectors (from 3.2 mm to 20.5 mm in diameter) in limited space with IP66/IP68**. The KEL-DPU-HD is particularly characterised by its solid robust frame and the increased strain relief of the routed cables.

The KEL-DPU-HD 24 matches exactly the cut-out dimensions of 24-pin standard industrial connectors. The cable entry plate is mounted either by screwing it to the inside of the enclosure or by snapping it into the cut-out.

** IP68 only when screw mounted

IP54

IP55

IP64

IP65

IP66

IP67

IP68

FDA

1935/
2004/
EG

EU VO.
10/2011

ECOLAB
certified



RoHS
compliant

REACH
COMPLIANCE

Made in
Germany

Specifications

IP rating (EN 60529)	IP54, IP55, IP64, IP65, IP66, IP67, IP68
Material	Elastomer Base frame: Polypropylene
Flame class	UL94-HB
Operating temperature	-40 C° to 80 C°
Properties	silicone free, resistant to oil and mould, higher chemical resistance, halogen free
Mounting options	Screw type mounting, Snap-in

Advantages & benefits

- Elastomer of the cable entry plate made of material according to 1935/2004/EG , (EU) 10/2011
- FDA compliant
- Developed according to hygienic design guidelines
- Hygienic design – free of dirt-collecting recesses
- Very flat design, very smooth surface ($R_a = 0,421 \mu\text{m}$ acc. to ISO 4287)
- Dual sealing of cables (IP66/IP68**)
- High strength and stability
- High strain relief
- Fast and easy assembly
- Very high cable density
- Cable diameter 3.2 – 20.5 mm
- Reproducible cleaning process
- Very low moisture absorption
- High resistance to aromatic solvents, oils, greases, mineral products

Product types & sizes

KEL-DPU-HD 24|13

Part No.	73940	Height	14 mm
EAN	4251269324260	Surface roughness (ISO 4287)	Ra = 0,421 µm
PU	10	Mounting height	14 mm
For max. no. of cables	13	Cut-out size	112 x 36 mm
Colour	blau (ähnlich RAL 5005)	Thread	M4
Length	147 mm	For min. wall thickness	1,5 mm
Width	58 mm	For max. wall thickness	2 mm
		No. of screw holes	4
		Diam. of screw holes	4 mm
		Clamping range	10 x 3.2 - 6.3 mm 3 x 16 - 20.5 mm

KEL-DPU-HD 24|14

Part No.	73944	Height	14 mm
EAN	4251269324277	Surface roughness (ISO 4287)	Ra = 0,421 µm
PU	10	Mounting height	14 mm
For max. no. of cables	14	Cut-out size	112 x 36 mm
Colour	blau (ähnlich RAL 5005)	Thread	M4
Length	147 mm	For min. wall thickness	1,5 mm
Width	58 mm	For max. wall thickness	2 mm
		No. of screw holes	4
		Diam. of screw holes	4 mm
		Clamping range	5 x 3.2 - 6.3 mm 2 x 4 - 7.5 mm 3 x 5.5 - 10.5 mm 1 x 8 - 12.5 mm 3 x 12 - 16.2 mm

KEL-DPU-HD 24|16

Part No.	73936	Height	14 mm
EAN	4251269324284	Surface roughness (ISO 4287)	Ra = 0,421 µm
PU	10	Mounting height	14 mm
For max. no. of cables	16	Cut-out size	112 x 36 mm
Colour	blau (ähnlich RAL 5005)	Thread	M4
Length	147 mm	For min. wall thickness	1,5 mm
Width	58 mm	For max. wall thickness	2 mm
		No. of screw holes	4
		Diam. of screw holes	4 mm
		Clamping range	8 x 3.2 - 5.5 mm 6 x 5 - 8.5 mm 2 x 9.5 - 14.5 mm

KEL-DPU-HD 24|16-1

Part No.	73932	Height	14 mm
EAN	4251269324291	Surface roughness (ISO 4287)	Ra = 0,421 µm
PU	10	Mounting height	14 mm
For max. no. of cables	16	Cut-out size	112 x 36 mm
Colour	blau (ähnlich RAL 5005)	Thread	M4
Length	147 mm	For min. wall thickness	1,5 mm
Width	58 mm	For max. wall thickness	2 mm
		No. of screw holes	4
		Diam. of screw holes	4 mm
		Clamping range	2 x 3.2 - 6.3 mm 9 x 4 - 7.5 mm 1 x 5.5 - 10.5 mm 1 x 8 - 12.5 mm 3 x 12 - 16.2 mm

KEL-DPU-HD 24|17

Part No.	73934	Height	14 mm
EAN	4251269324307	Surface roughness (ISO 4287)	Ra = 0,421 µm
PU	10	Mounting height	14 mm
For max. no. of cables	17	Cut-out size	112 x 36 mm
Colour	blau (ähnlich RAL 5005)	Thread	M4
Length	147 mm	For min. wall thickness	1,5 mm
Width	58 mm	For max. wall thickness	2 mm
		No. of screw holes	4
		Diam. of screw holes	4 mm
		Clamping range	4 x 3.2 - 6.3 mm
			2 x 4 - 7.5 mm
			1 x 5.5 - 10.5 mm
			10 x 8 - 12.5 mm

KEL-DPU-HD 24|20

Part No.	73938	Height	14 mm
EAN	4251269324314	Surface roughness (ISO 4287)	Ra = 0,421 µm
PU	10	Mounting height	14 mm
For max. no. of cables	20	Cut-out size	112 x 36 mm
Colour	blau (ähnlich RAL 5005)	Thread	M4
Length	147 mm	For min. wall thickness	1,5 mm
Width	58 mm	For max. wall thickness	2 mm
		No. of screw holes	4
		Diam. of screw holes	4 mm
		Clamping range	12 x 3.2 - 5.5 mm
			8 x 5 - 10.5 mm

KEL-DPU-HD 24|21

Part No.	73930	Height	14 mm
EAN	4251269324321	Surface roughness (ISO 4287)	Ra = 0,421 µm
PU	10	Mounting height	14 mm
For max. no. of cables	21	Cut-out size	112 x 36 mm
Colour	blau (ähnlich RAL 5005)	Thread	M4
Length	147 mm	For min. wall thickness	1,5 mm
Width	58 mm	For max. wall thickness	2 mm
		No. of screw holes	4
		Diam. of screw holes	4 mm
		Clamping range	1 x 3.2 - 6.3 mm
			14 x 4 - 7.5 mm
			4 x 5.5 - 10.5 mm
			2 x 8 - 12.5 mm

KEL-DPU-HD 24|32

Part No.	73942	Height	14 mm
EAN	4251269324338	Surface roughness (ISO 4287)	Ra = 0,421 µm
PU	10	Mounting height	14 mm
For max. no. of cables	32	Cut-out size	112 x 36 mm
Colour	blau (ähnlich RAL 5005)	Thread	M4
Length	147 mm	For min. wall thickness	1,5 mm
Width	58 mm	For max. wall thickness	2 mm
		No. of screw holes	4
		Diam. of screw holes	4 mm
		Clamping range	32 x 3.2 - 6.3 mm

